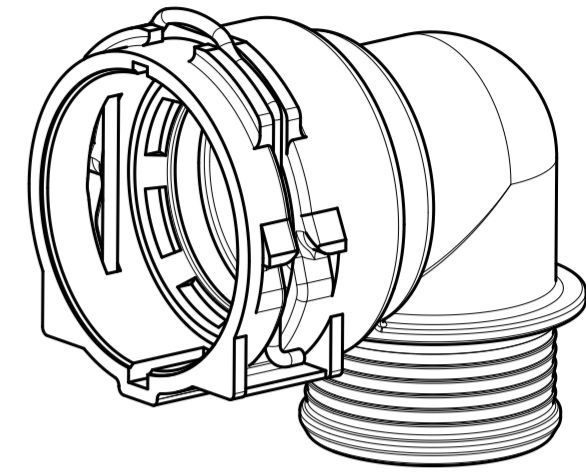
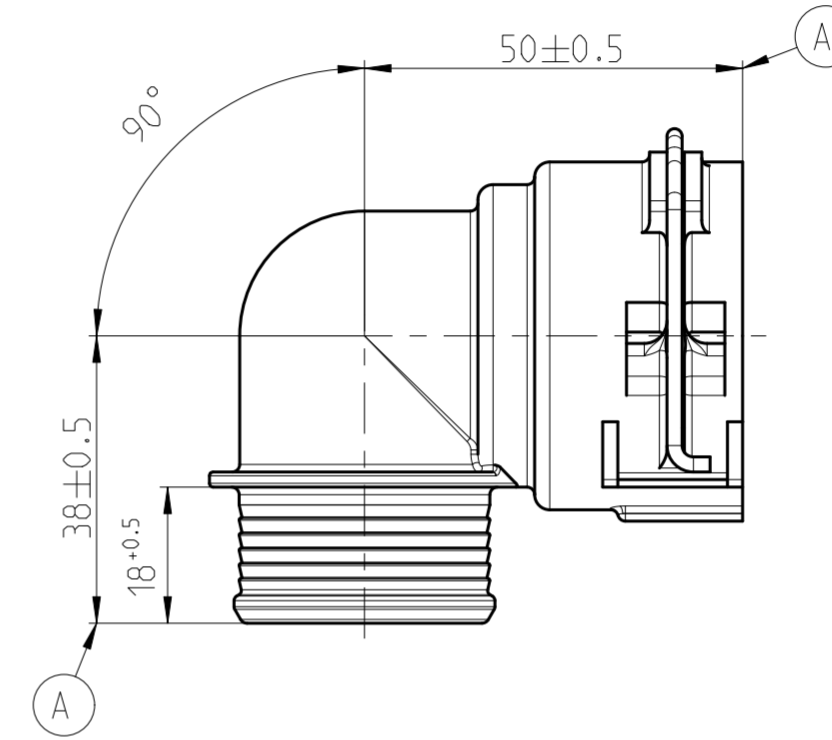
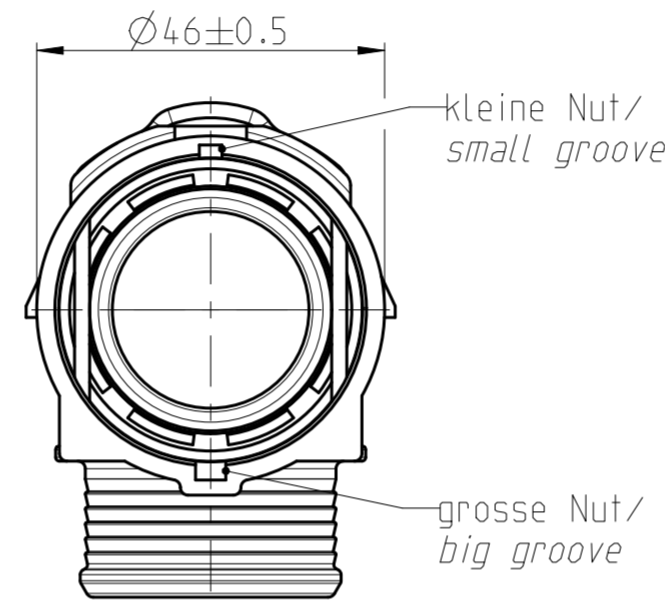
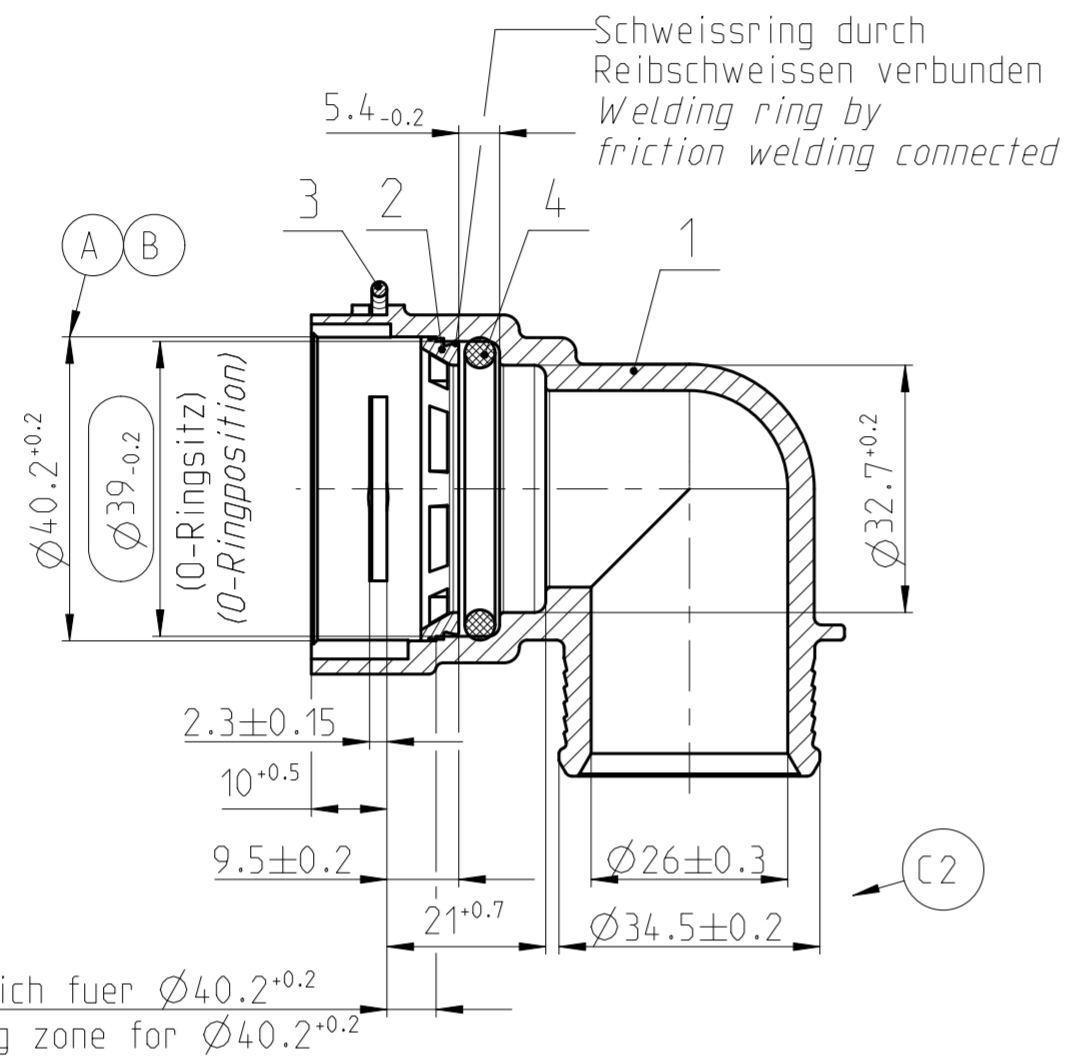


Angebotszeichnung
QUOTATION DRAWING

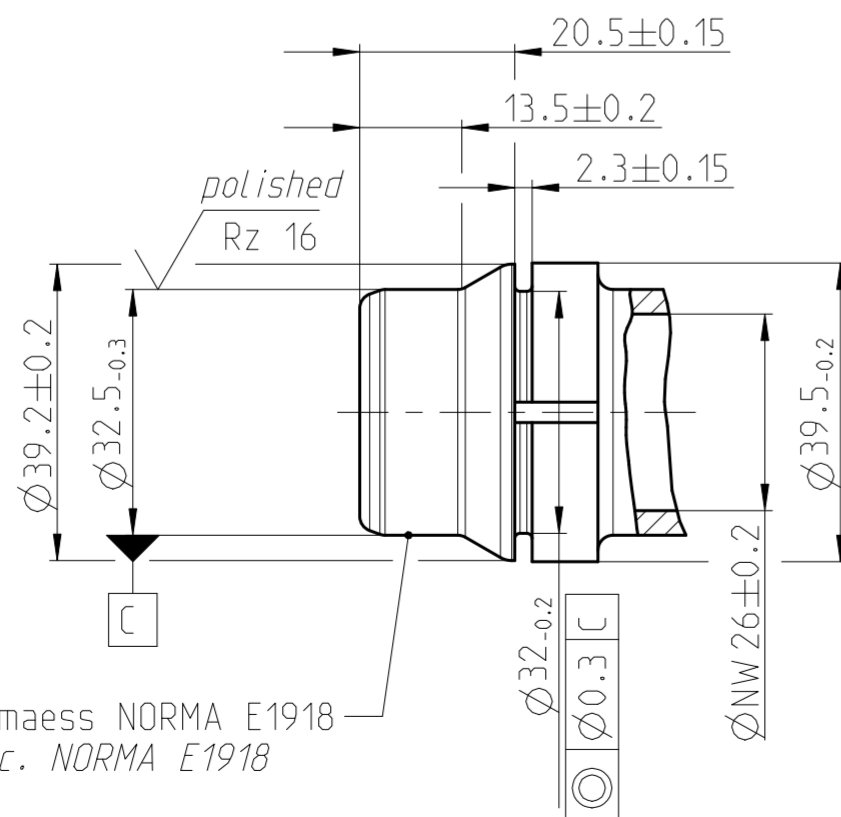
Teil-Nr ITEM-NO	Stueck QTY	Benennung PART - NAME	Werkstoff MATERIAL	Oberflaeche SURFACE
1	1	Housing NW 26-90*	PA66-GF30	black
2	1	Weld ring NW 26	PA66-GF30	black
3	1	Locking bail NW 26	EN 10270-3 -1.4310-NS-2.0	blank
4	1	O-RING 32.0 X 4.0	EPDM-60	black

SCHNITT / SECTION A-A



MASSTAB / SCALE 1:1

Ansicht Stutzen / View spigot
MASSTAB / SCALE 1:1



Nicht angegebene Masse gemass NORMA E1918
Not specified dimension acc. NORMA E1918

NORMAQUICK - ASSEMBLY MARKING			
Customer part-No.:	-		
Trademark:	-		
Manufacturer code:	NORMA-RSS		
NORMA date code:	XX YY		
Material code molding part:	>PA66-GF30<		

-	-	-	-	-	-	-	-	-	-
-	C	3	1) Messbereich hinzu / measuring zone added 2) Mass entfernt / dimension removed 3) Werkstoffnorm aktualisiert / material spec. updated	-	2012-09-20	TS/IC	Ries		
-	B	1	$\varnothing 39_{-0.2}$ war $\varnothing 38.7_{-0.2}$ $\varnothing 40.2^{+0.2}$ war $\varnothing 39.8^{+0.2}$	604754	2006-09-11	Mertens	Bauer		
-	A	4	Gehaeuse geaendert; 2x Tol ± 0.5 war ± 1 ; $\varnothing 39.8 \pm 0.2$ war $\varnothing 40.2 \pm 0.2$	604095	2006-02-22	SB/IC	Bauer		
INDEX Teil/ PART	Zeichn DWG	Anz. QTY.	Aenderung DESCRIPTION		Aend.Nr. CHANGE-NO.	Datum DATE	Bearb. DRAWN	Gepr. CHECKED	
Allgemeintoleranz: GENERAL TOLERANCE:		Form- und Lagetoleranz: FORM AND POS. TOL.:		Abmass fuer Winkel: DEVIATION FOR ANGLE:	Gewicht / WEIGHT: errechnet / calculated	gewogen / actual	Volumen: VOLUME:	Pruefkennzeichnung: TEST MARKING:	
-		-		$\pm 2^\circ$	-	-	- cm ³		
Projektions-Methode 1 1st ANGLE PROJECTION DIN ISO 128-30		Material: see parts list Material-No.: - Oberflaeche: see parts list SURF. QUAL.: -			PART NAME: NORMAQUICK PS3 NW 26-90° locking bail blank				
NORMA-Patentnummer: PATENT NUMBER:		Massstab: SCALE:	Datum/DATE	Name/NAME	Benennung: NORMAQUICK PS3 NW 26-90° Verriegelungsring blank				
		1:1	2002-02-04	Imago-Gr					
Bandlaenge: LENGTH OF BAND:		Schutzvermerk nach ISO 16016 beachten CONSIDER AFTER PROTECTION NOTICE ISO 16016							
ZNE:		Kunde / CUSTOMER:							
Ursprung/Anfrage: ENQUIRY-No.:		NORMA Germany GmbH Postfach 1149 • 63461 Maintal © COPYRIGHT BY NORMA Group			Zeichnungs-Nr. / DRAWING-NO.:		INDEX PART DWG TYPE		
9900010287		EAD-SYSTEM Pro/Engineer			0702 8011 026		00 0C Q		
		DRAWING-NAME: 07028011026_Q			SUB.F.: -		SUB.FROM: -		
		MODEL-NAME: 07028011026			MODEL-TYP: ASSEM				